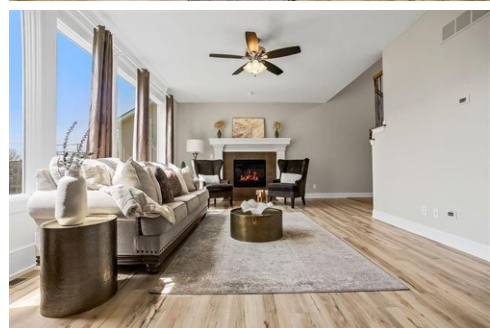




\$ 455,000



18447 W 154th Ter, Olathe, KS 66062

- » Beds: 4 | Baths: 2 Full, 1 Half
- » MLS #: 2612897
- » Single Family | 2,242 ft² | Lot: 7,867 ft²
- » More Info: [18447W154thTer.IsForSale.com](https://www.kcabcde.com/18447W154thTer.IsForSale.com)



Chrissy Frazier
 (816) 518-4181 (Mobile)
chrissy.frazier@kcabcde.com



Chartwell Realty LLC
 6312 Brookside Plaza
 Kansas City, MO 64113
 (816) 877-8200

Beautifully maintained and move-in ready, this Olathe home is a must-see! Ideally located just minutes from Garmin headquarters, major highways, shopping, dining, and top-rated Olathe schools, this home offers both convenience and lifestyle. Great curb appeal welcomes you with an extended front porch, full-width 3-car driveway, and a spacious 3-car garage complete with built-in shelving. Step inside to a refreshed interior featuring fresh paint throughout and refinished flooring that adds warmth and style. The kitchen is equipped with stainless appliances that all remain with the home. The main level offers a comfortable and functional open concept layout ideal for both daily living and entertaining. The lower level includes a finished non-conforming bedroom or flex room perfect for a home office, guest space, or workout area, while the remaining unfinished basement provides excellent future equity potential. Upstairs, you'll find generously sized bedrooms, including an oversized bedroom with vaulted ceilings, a recessed nook ideal for a play area or workspace, and a walk-in closet. The spacious Primary Suite features vaulted ceilings and an ensuite bath with double vanity, corner jetted tub, separate shower with bench, private water closet, and walk-in closet with built-in mirror. Enjoy outdoor living in the beautifully landscaped backyard, complete with a hi-level stamped patio, ambient lighting, pergola, and built-in gas fire table.

